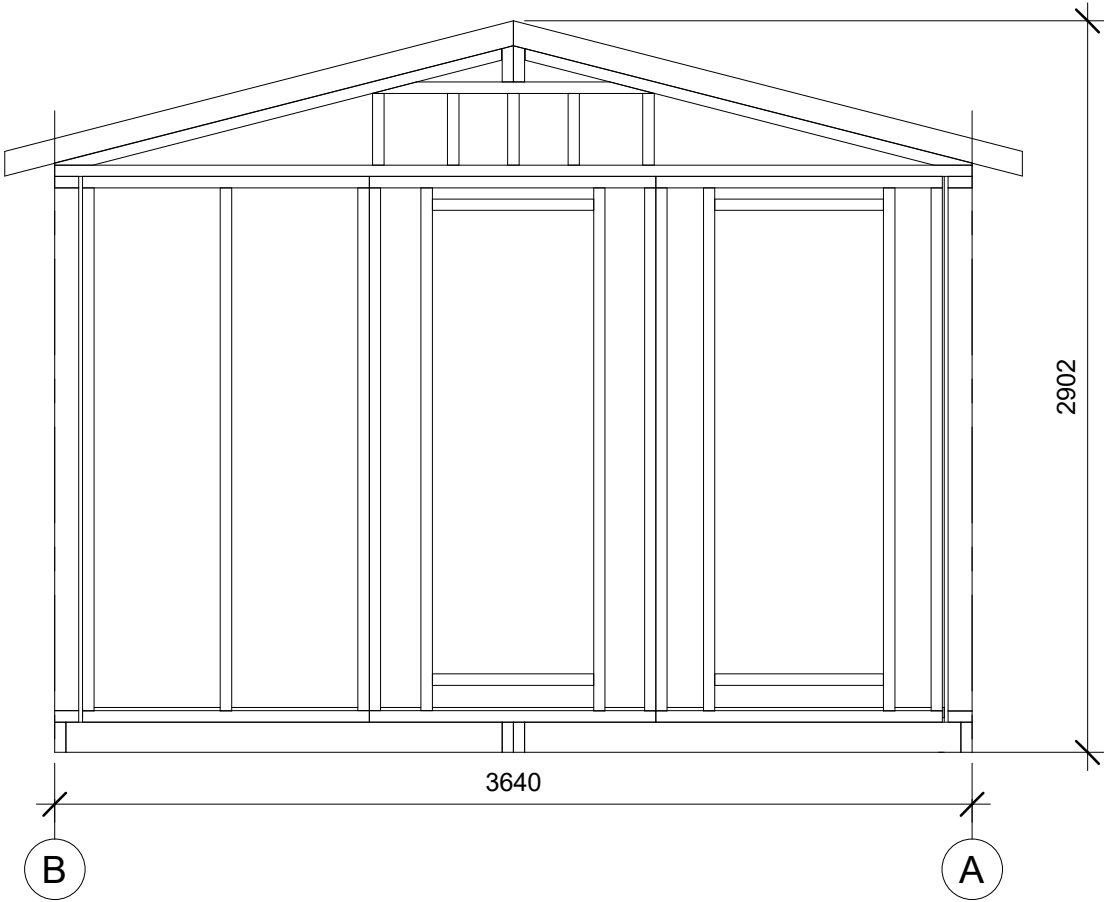
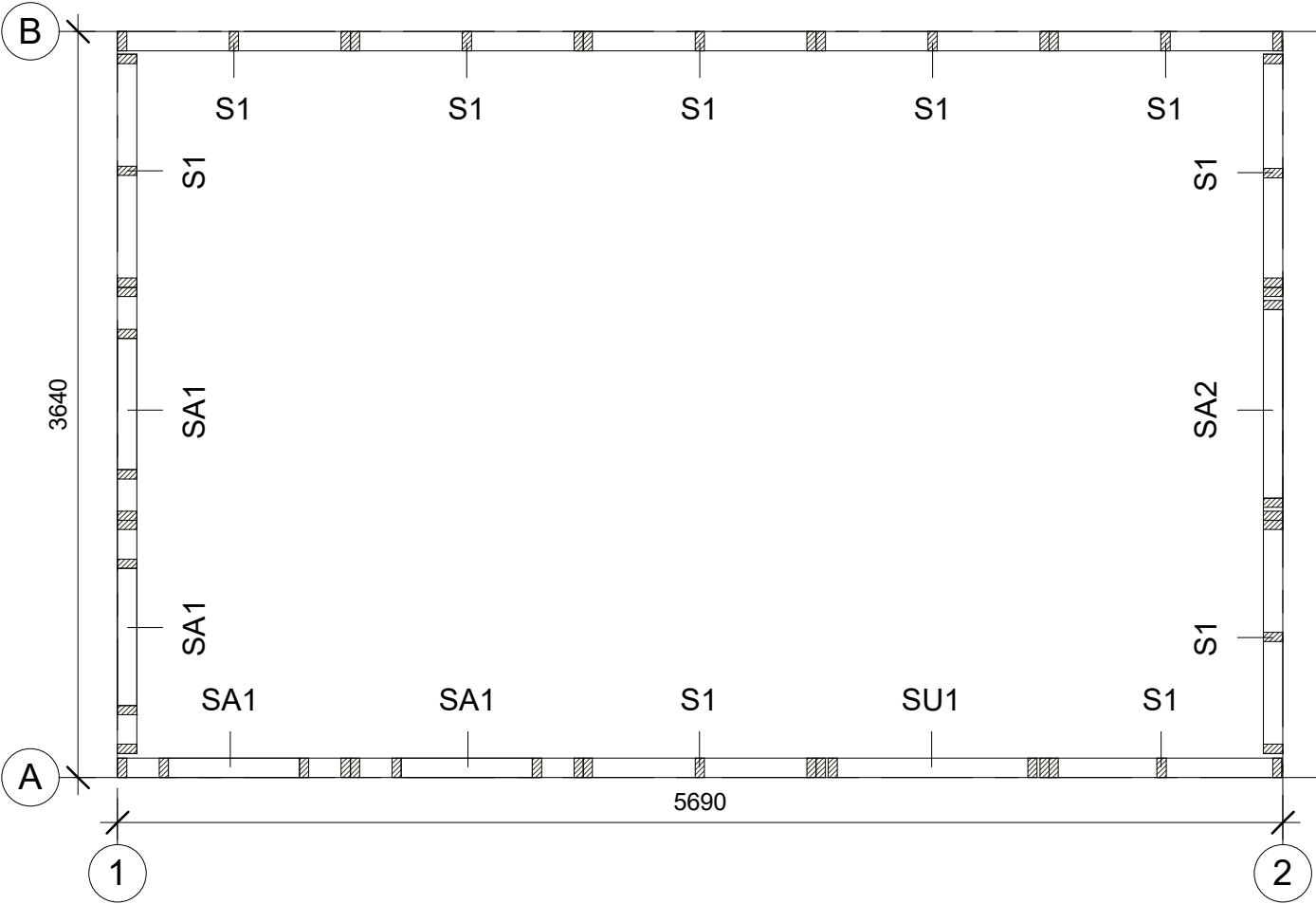


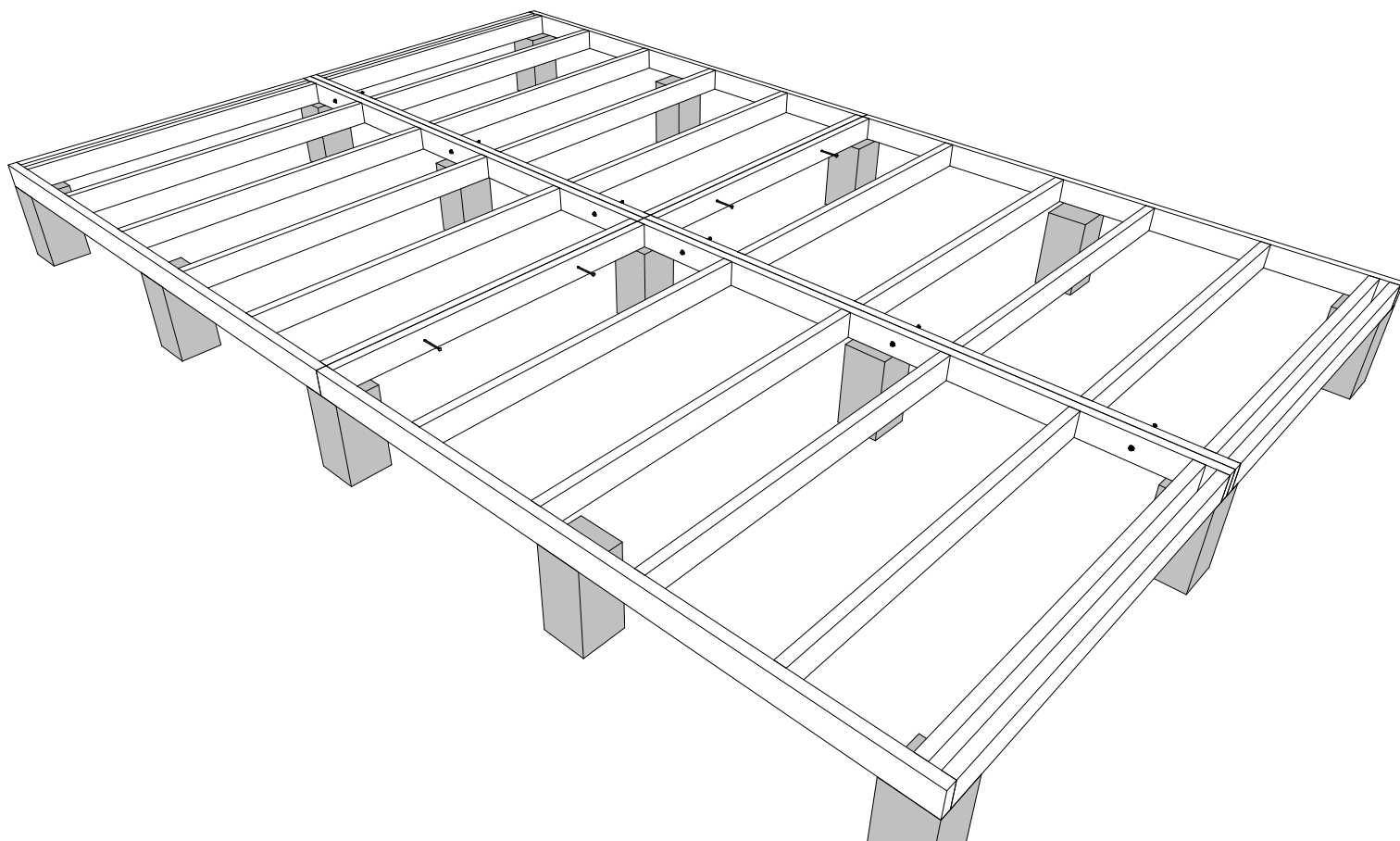
Element house 21m2

Samanta

Assembly instructions





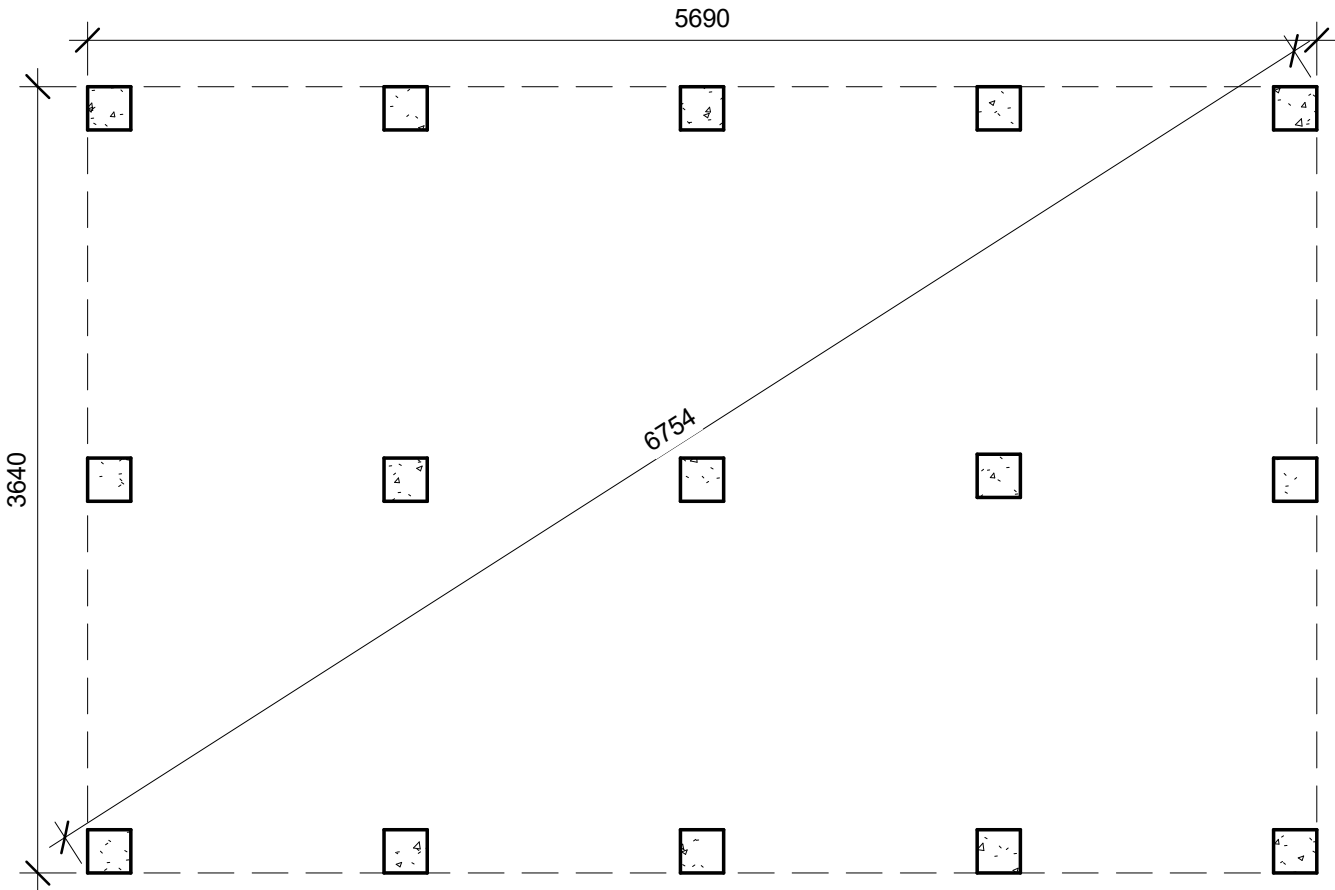
**Bolts**

- SCR1 - M6x120mm bolts, 10 pcs.

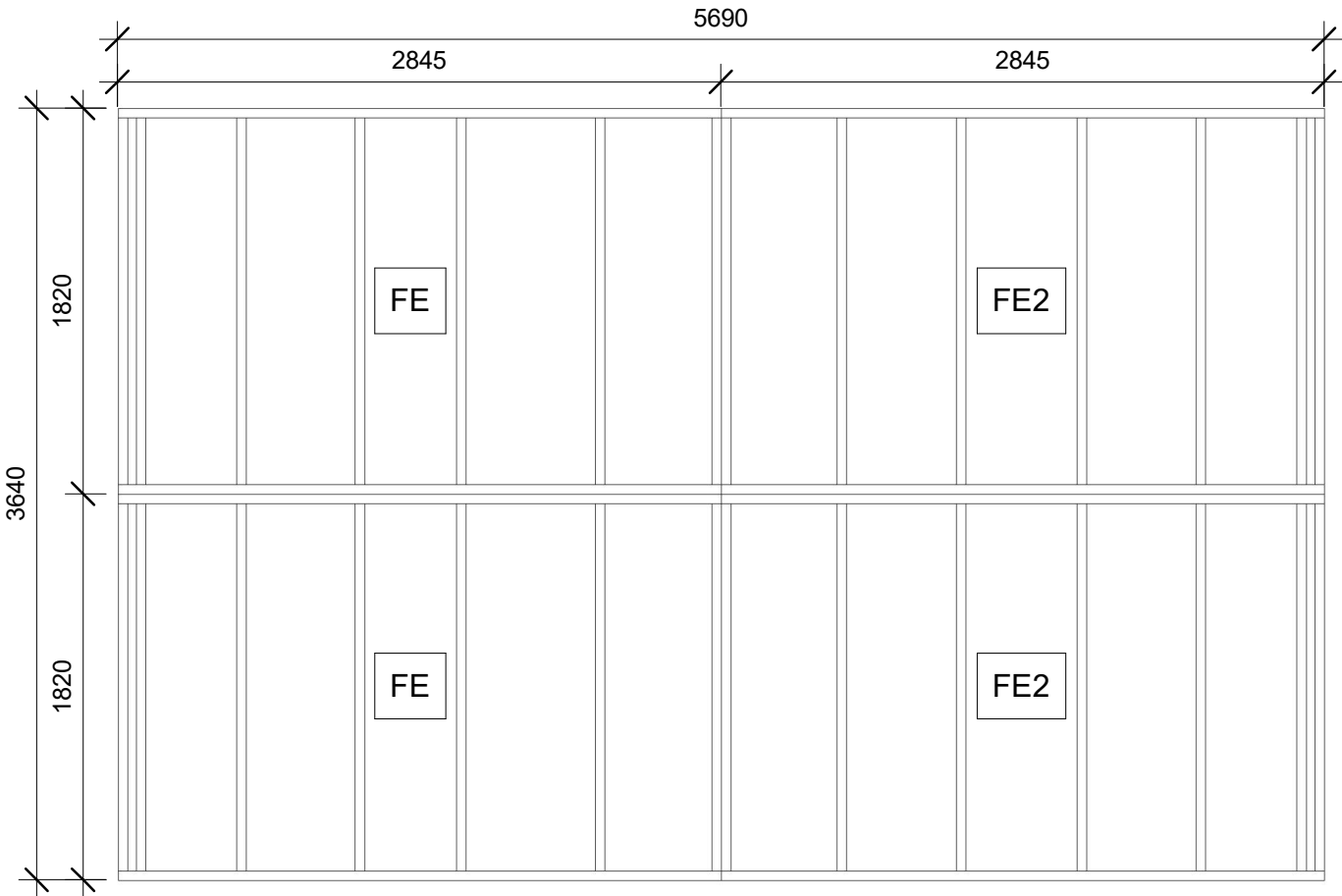
**Nuts**

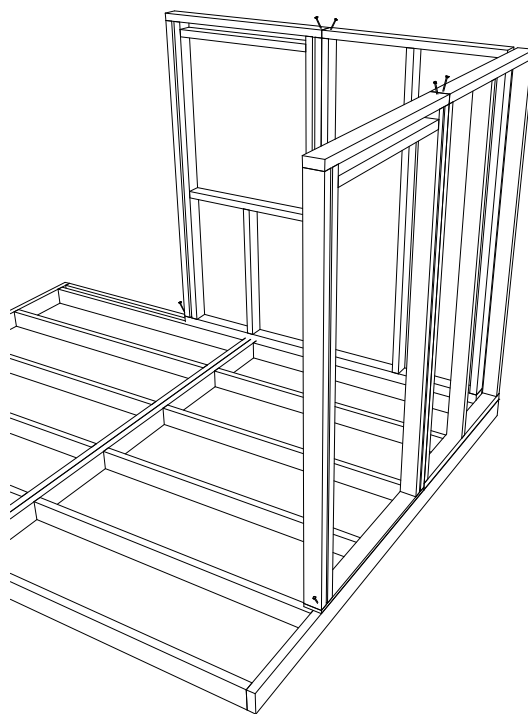
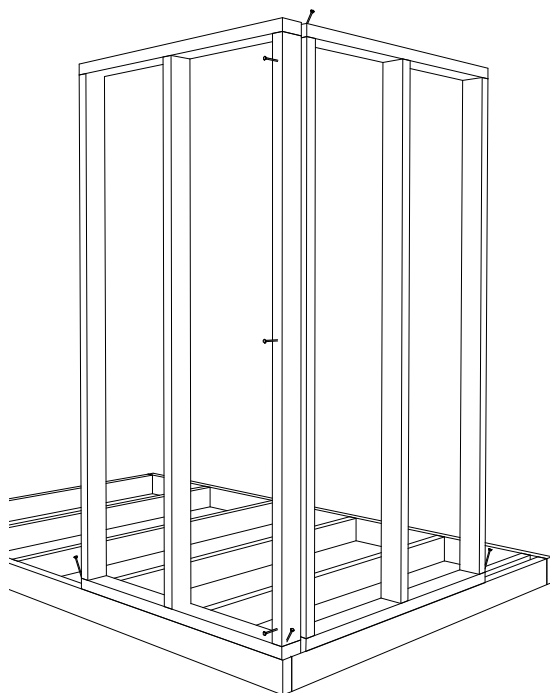
- SCR2 - M6 nuts with washer, 10pcs.





Foundation element layout



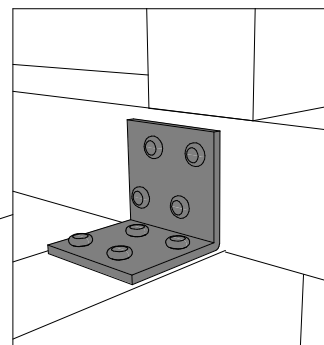
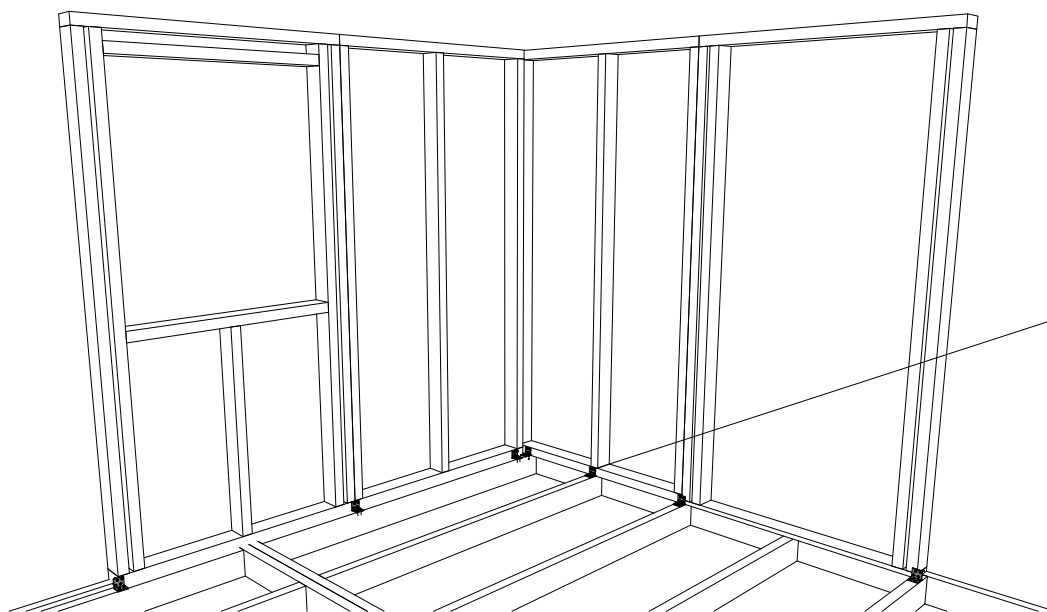


Screws

- SCR5 - 6x160mm screws, 56 pcs.



Wall panel montage (inside)



Metal angle

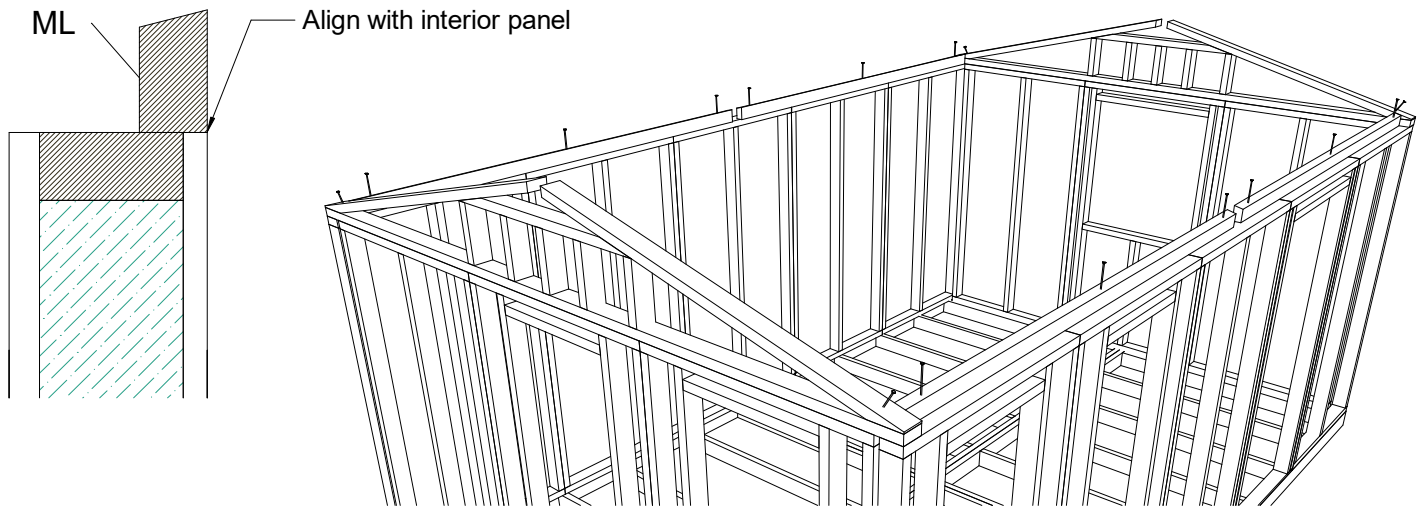
- SCR3 - Metal angle 40x40mm, 32 pcs.



Screws

- SCR4 - 5x40mm Flat head screws, 320pcs.



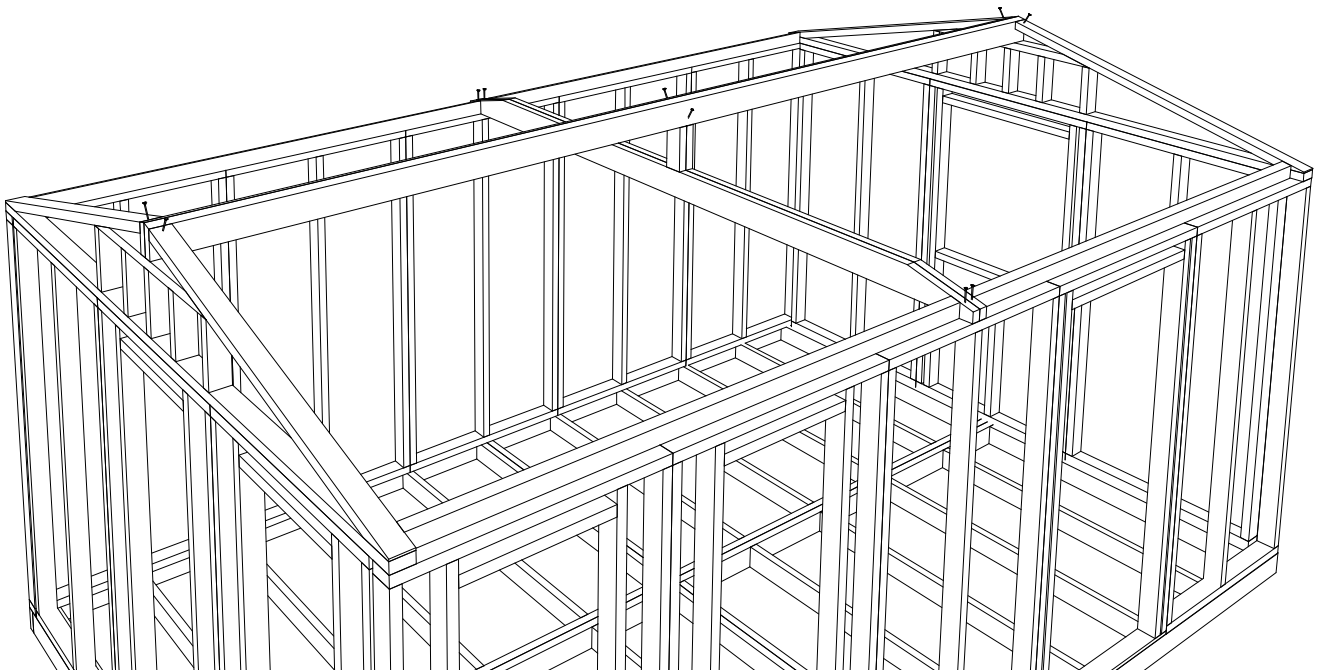


Screws

- SCR5 - 6x160mm screws, 16 pcs.



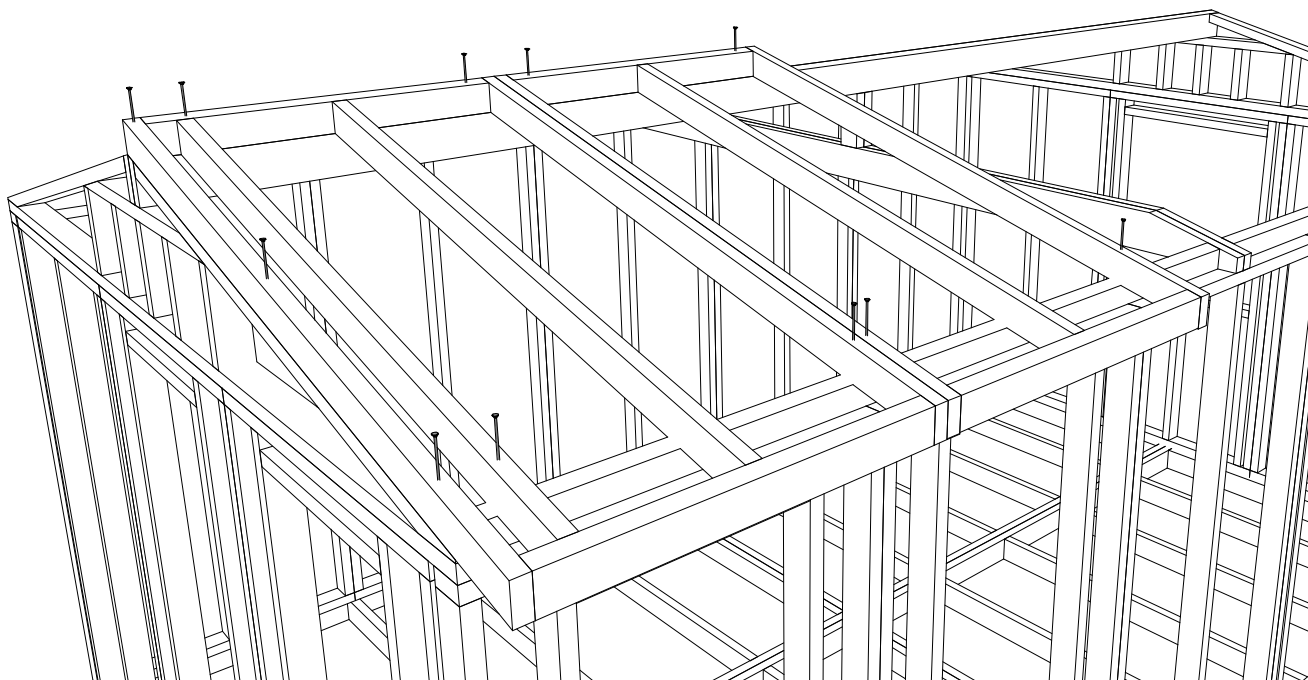
Roof element and rafter support beam montage



Screws

- FBS - 6x80mm screws, 10 pcs.



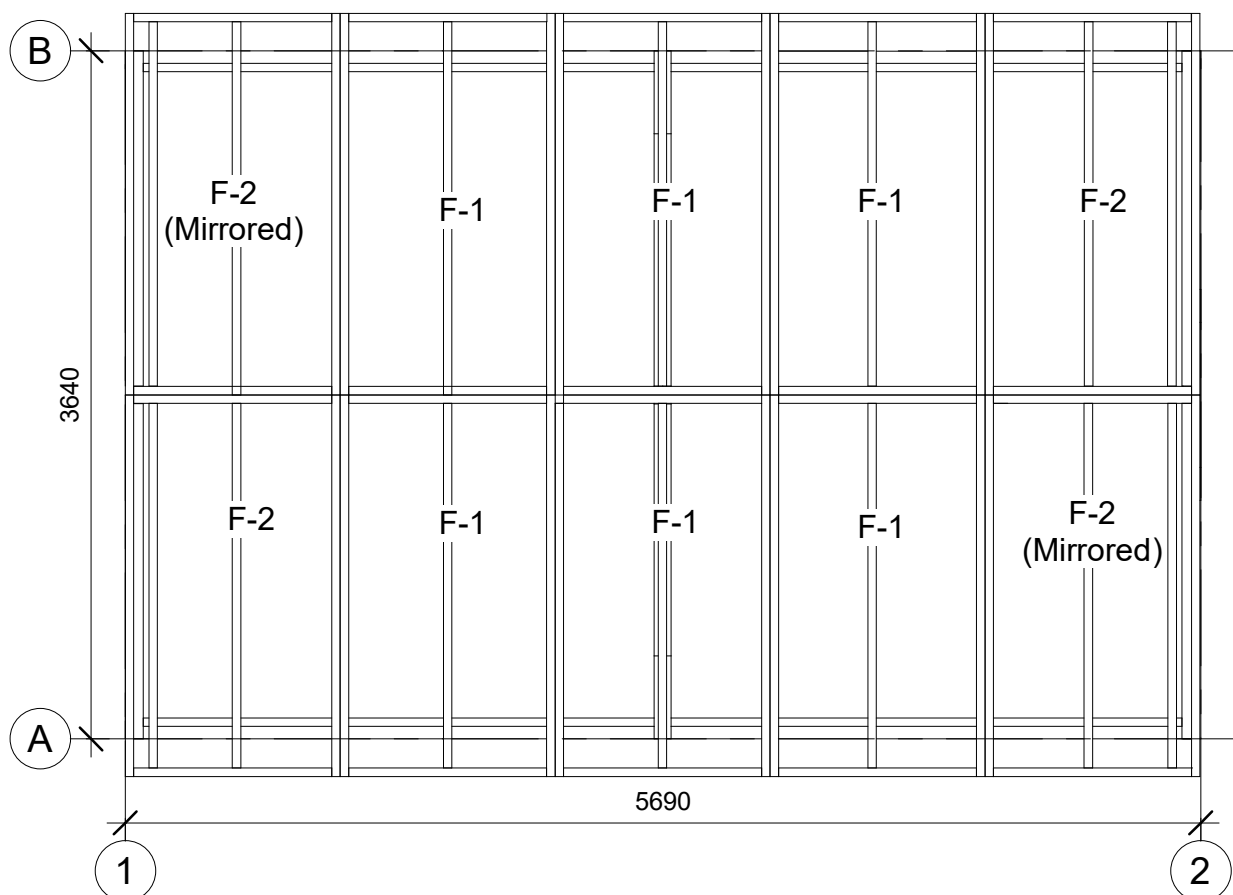


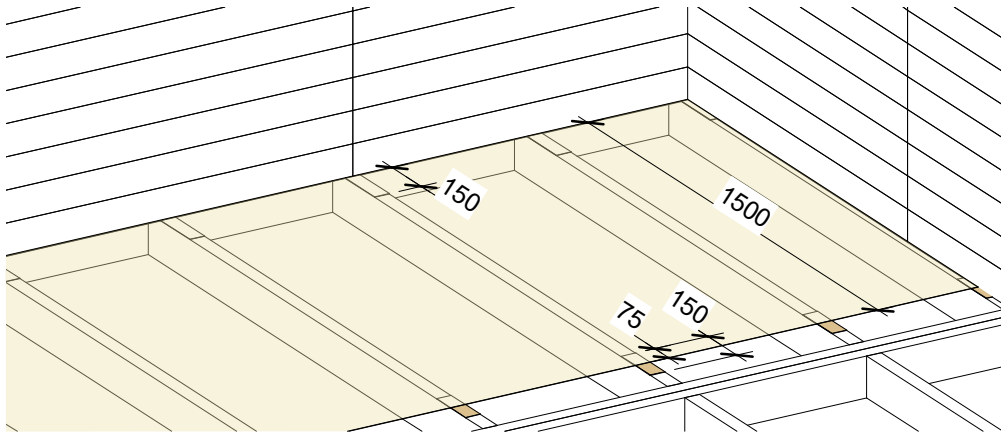
Screws

- SCR5 - 6x160mm screws, 52 pcs.



Roof panel layout





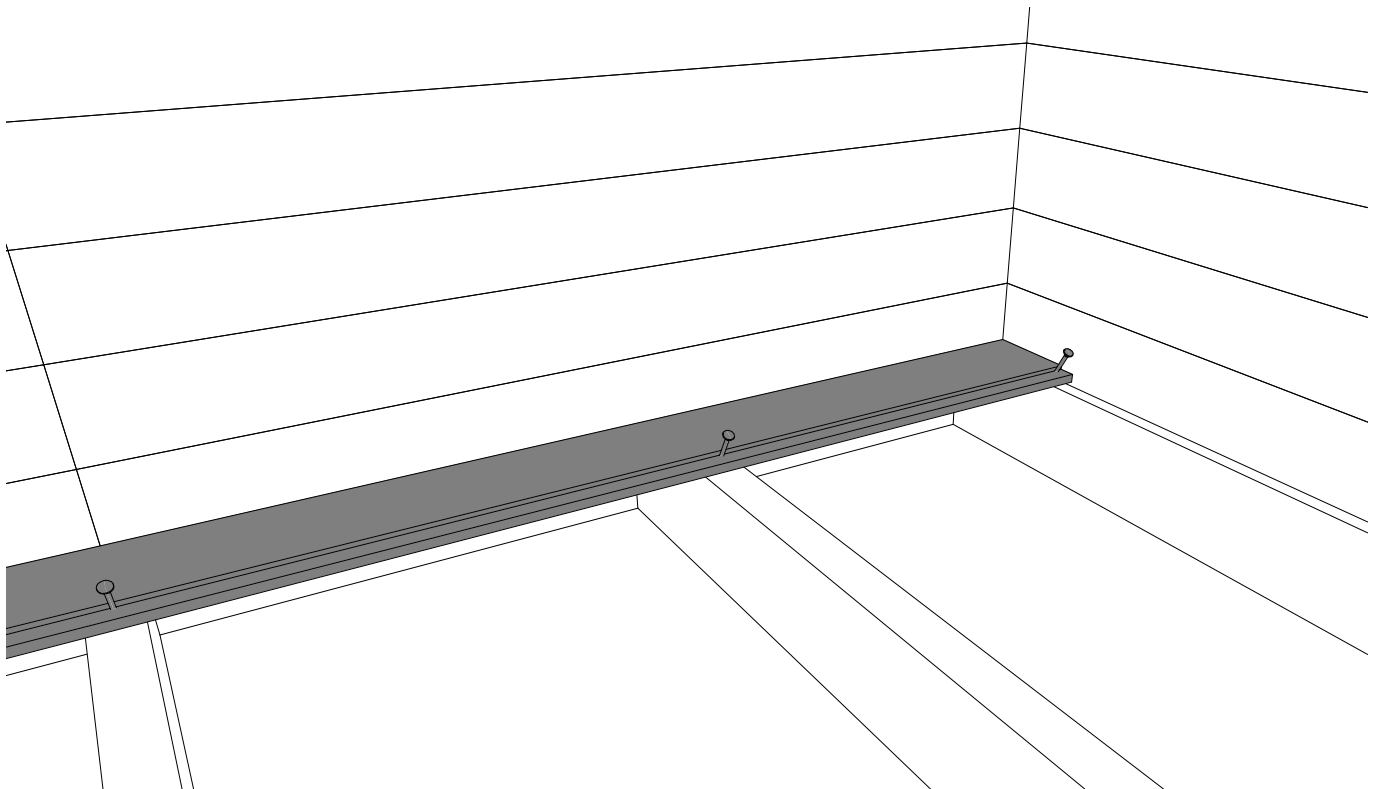
- VBT - double sided tape



- VB - Vapor barrier

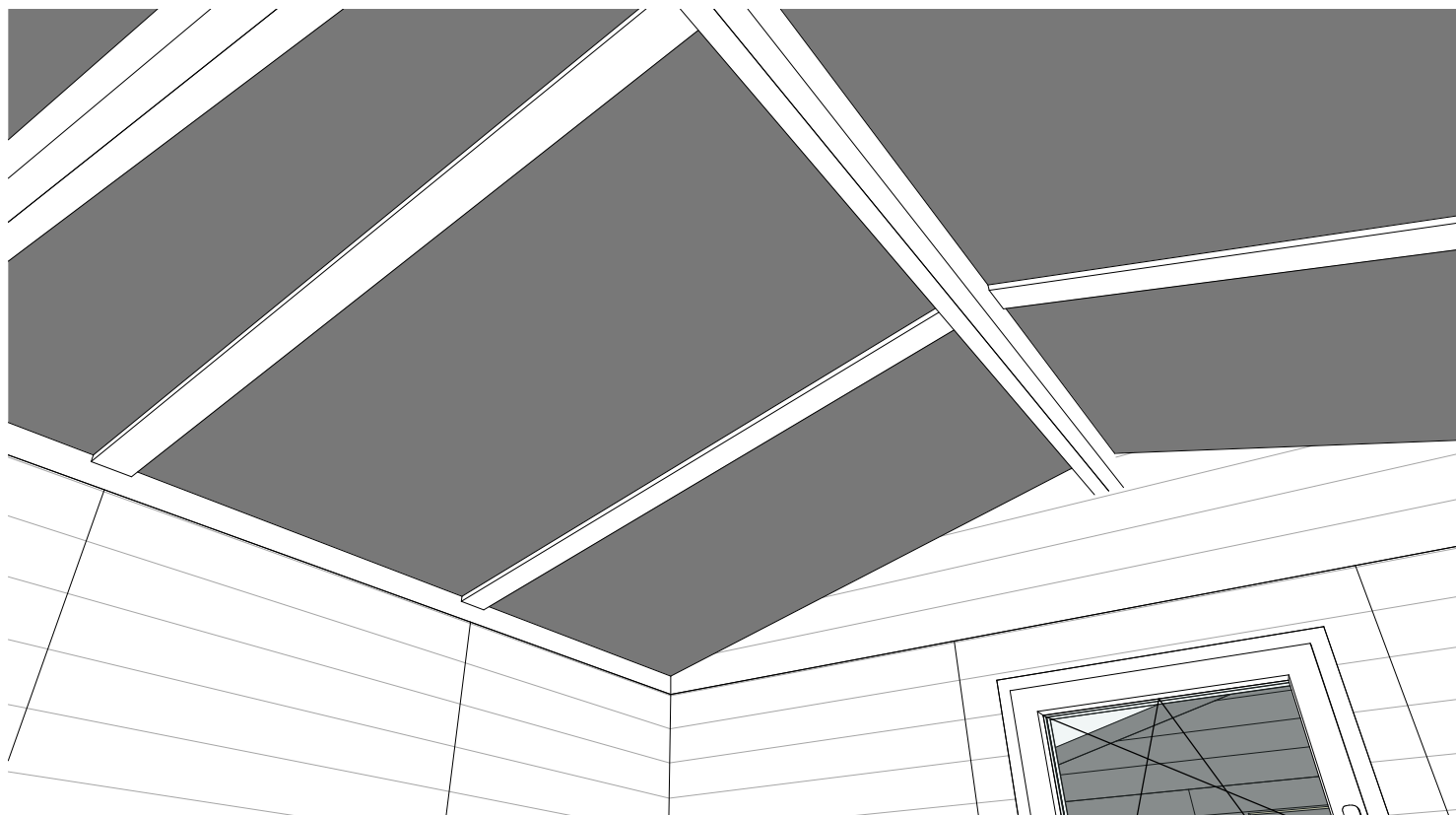


Vapor barrier montage

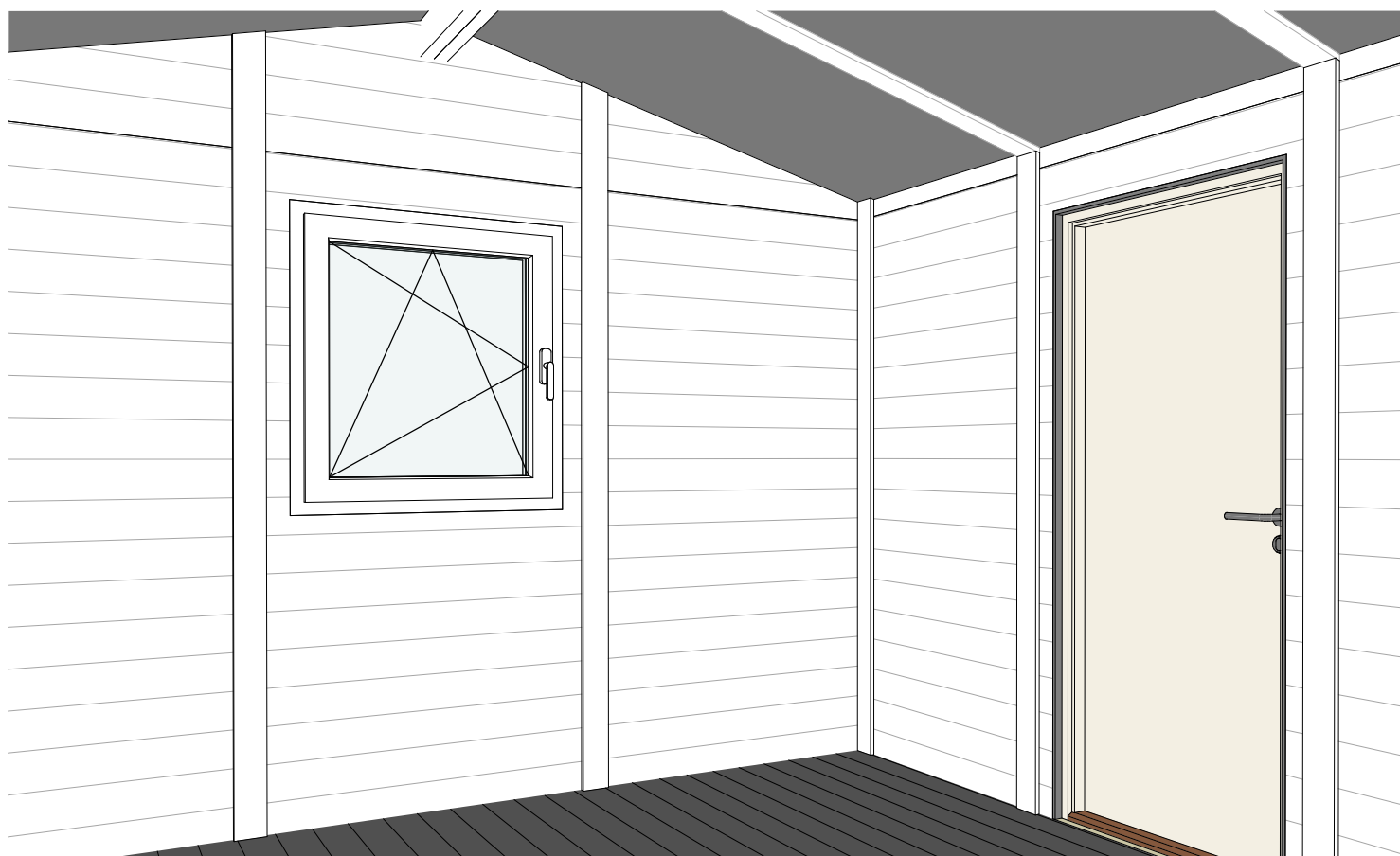
**Screws**

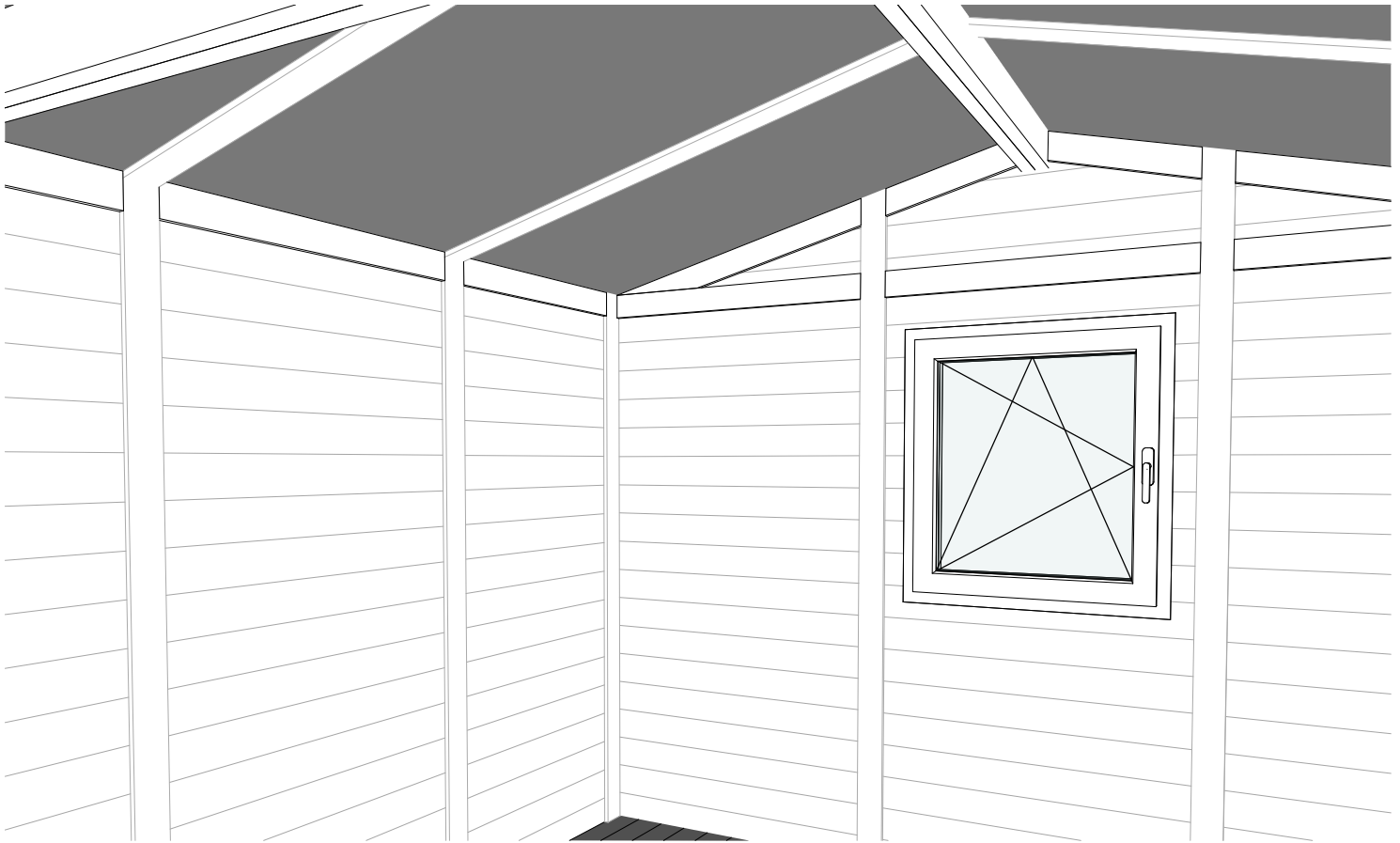
- FWBSCR - 4.2x42/65mm screws, 400 pcs.





Wall panel vertical connection boards



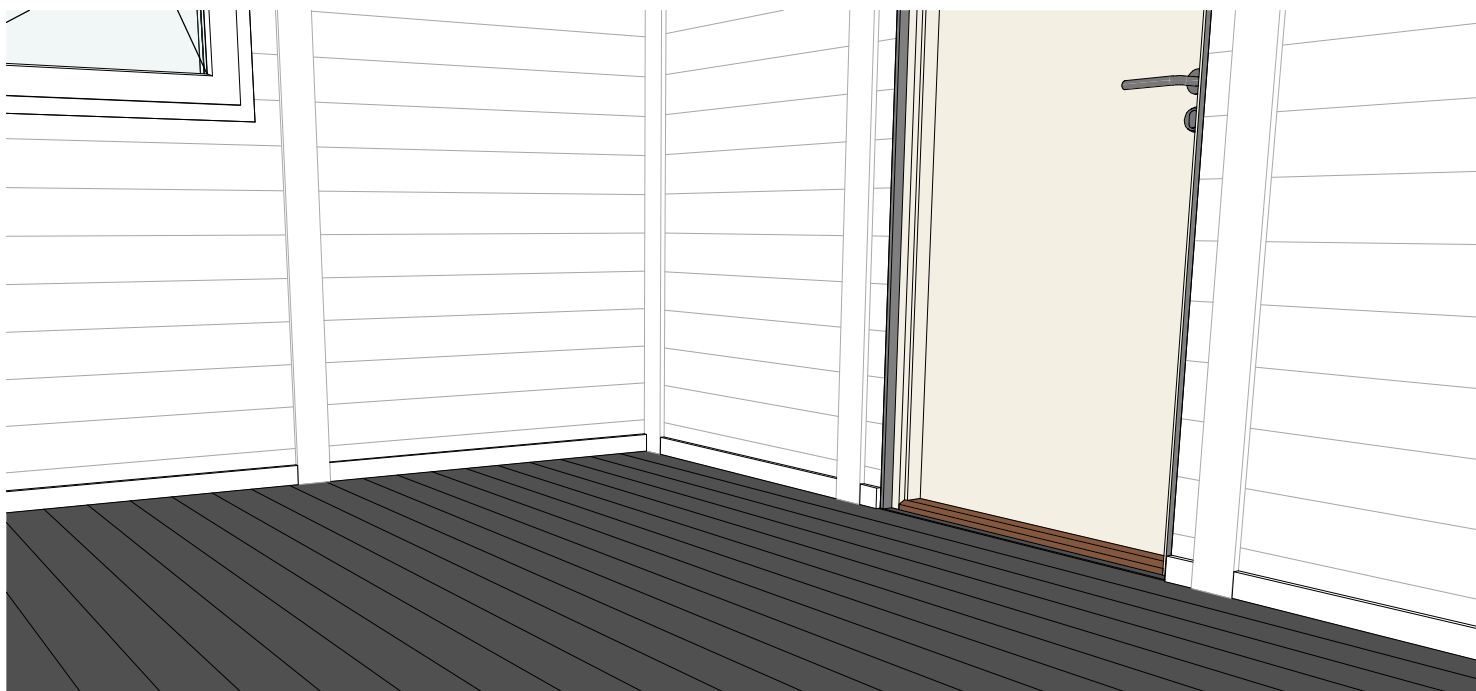
**Nails**

- BN - 2.1x50mm coil nails

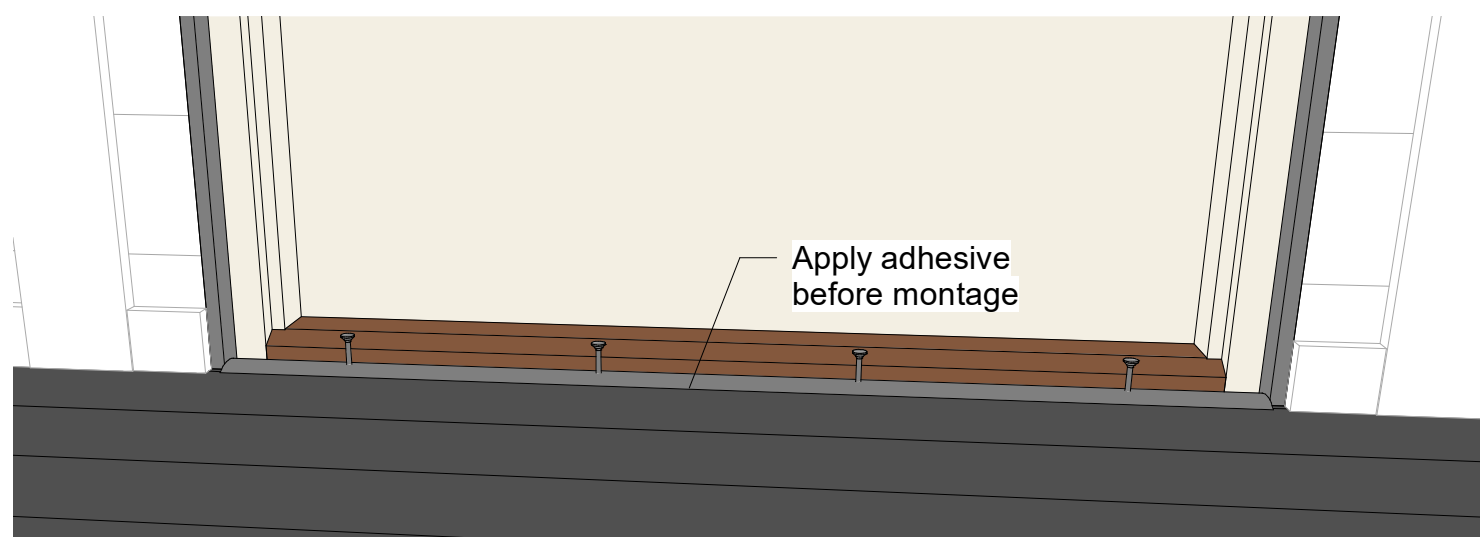
**Materials:*****Sawn to length during montage**

- CB - Ceiling connection boards 16x95mm, 8 pcs.
- WBV - Vertical connection boards 16x95mm, 16 pcs.
- WBH - Horizontal connection boards 16x95mm, 24 pcs.





Door threshold montage



Screws

- TSSCR - 3x30mm screws, 6 pcs.

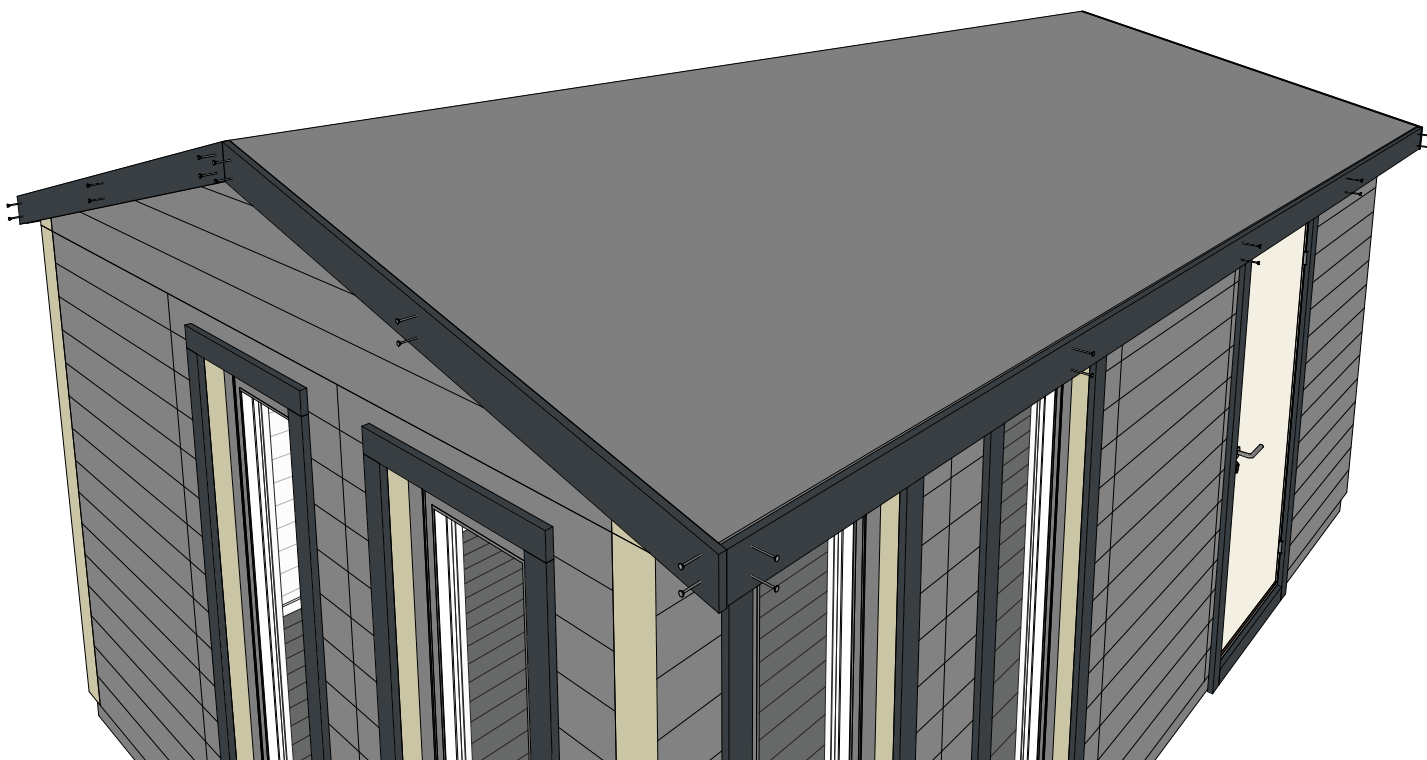


Materials

*Sawn to length during montage

- TS1 - Floor skirting 14x55x1100mm 16 pcs.
- TS2 - Aluminum threshold 40x1200mm 1 pc.
- MA - Multipurpose transparent hybrid adhesive





Screws

SCR7 - 5x50mm screws, 76 pcs.

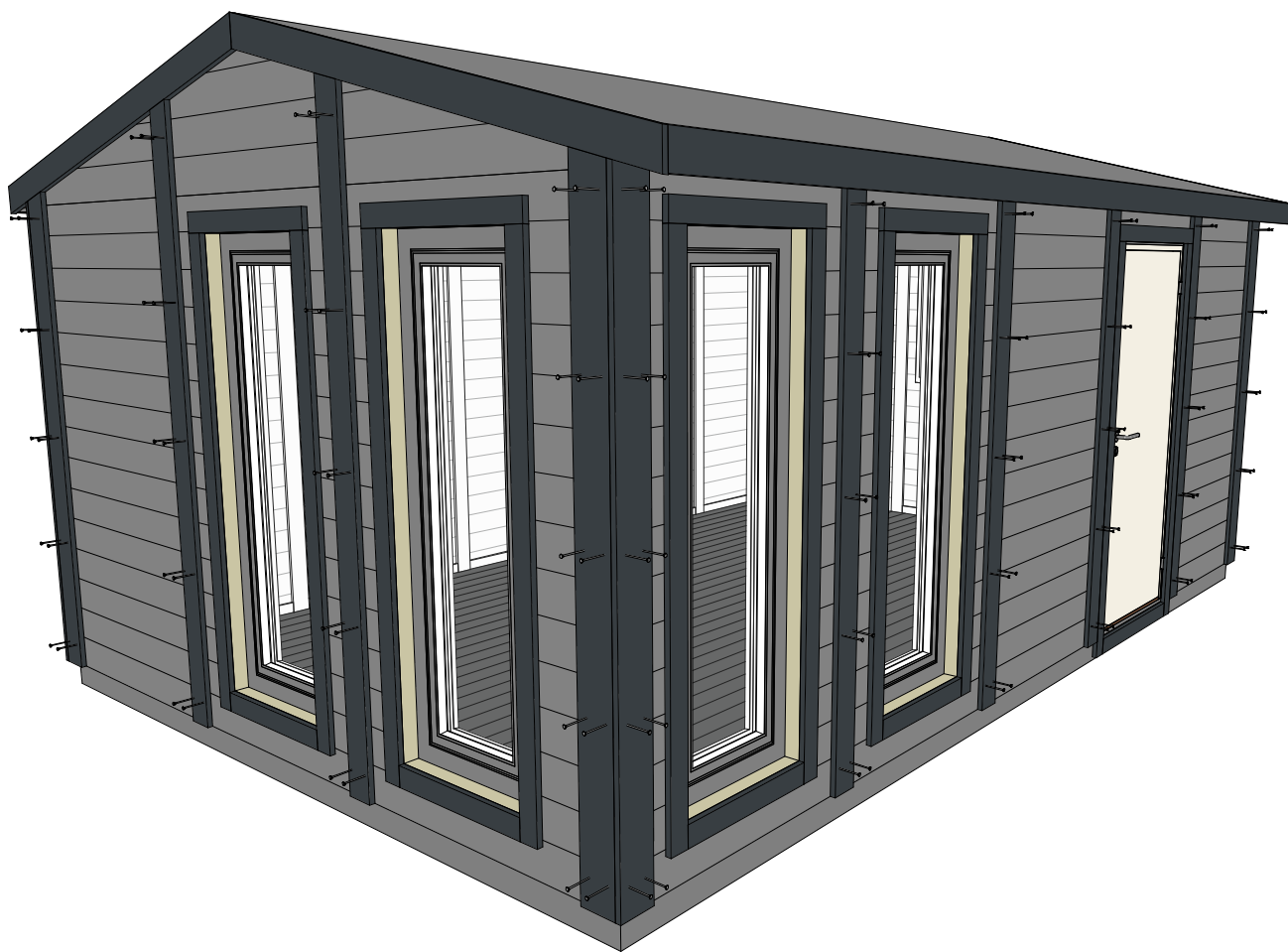


Materials

*Sawn to length during montage

- RB1 - Roof front boards 22x120x2200mm, 4 pcs.
- RB2 - Roof front boards 22x120x6000mm, 2 pcs.





Screws

- FBS - 6x80mm screws, 200 pcs.

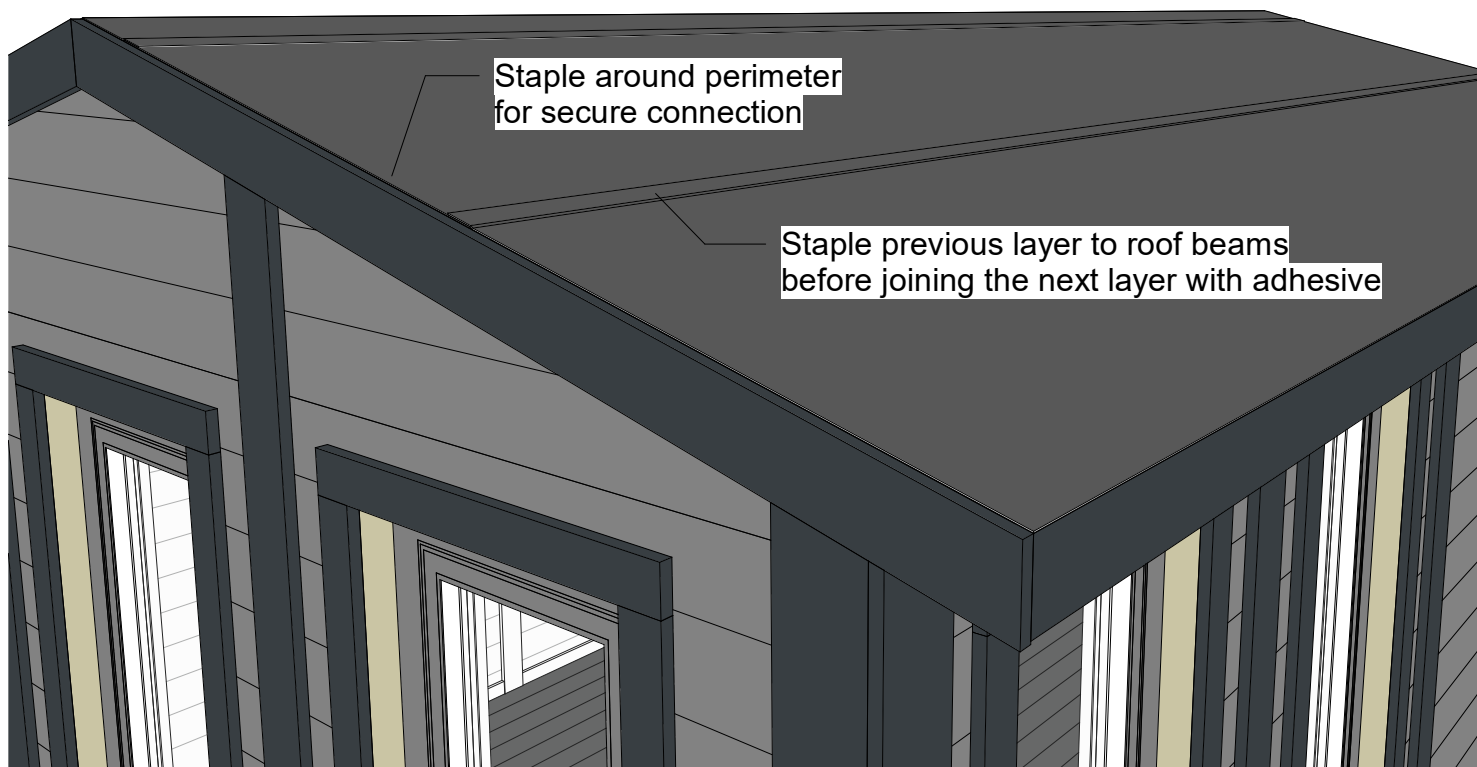


Materials

*Sawn to length during montage

- FB - Facade connection boards 20x95mm, 12 pcs.
- FB2 - Corner connection boards 20x145mm, 8 pcs



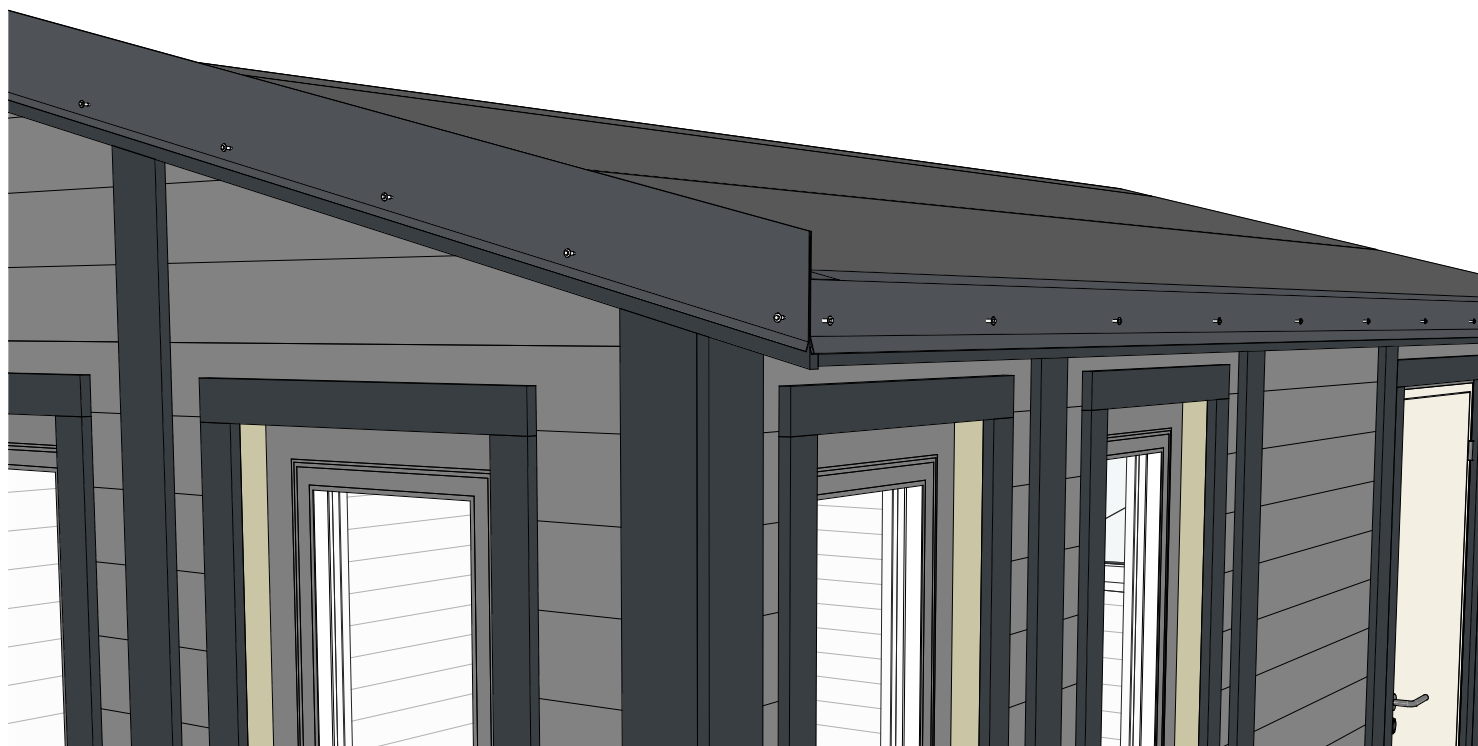
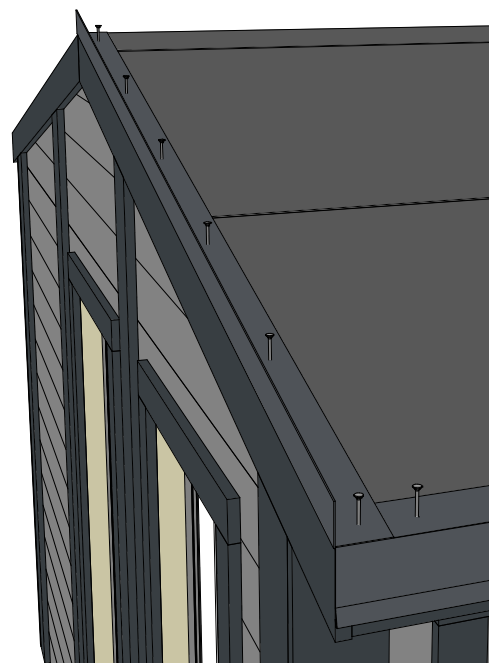
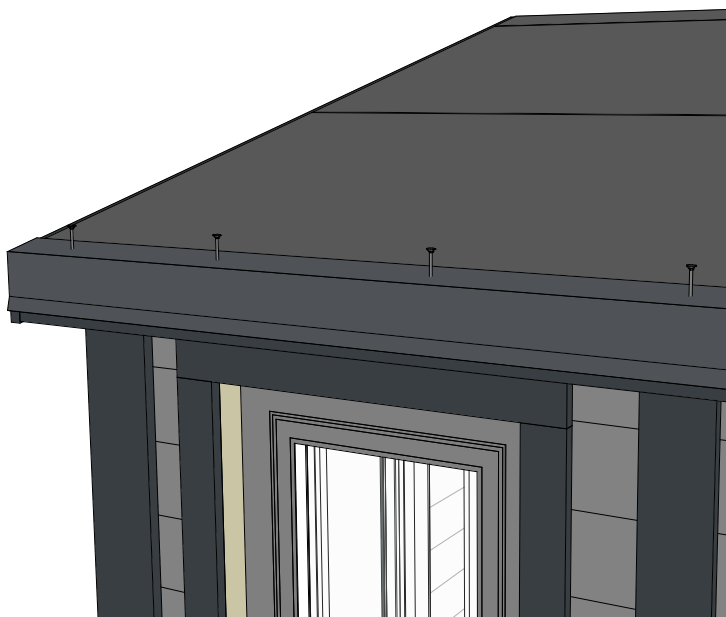


Materials

*Cut to length during montage

- R1 - Bitumen underlayer, 30 sqm.





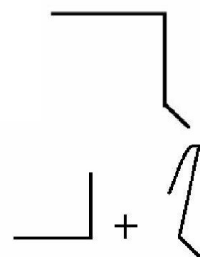
Screws

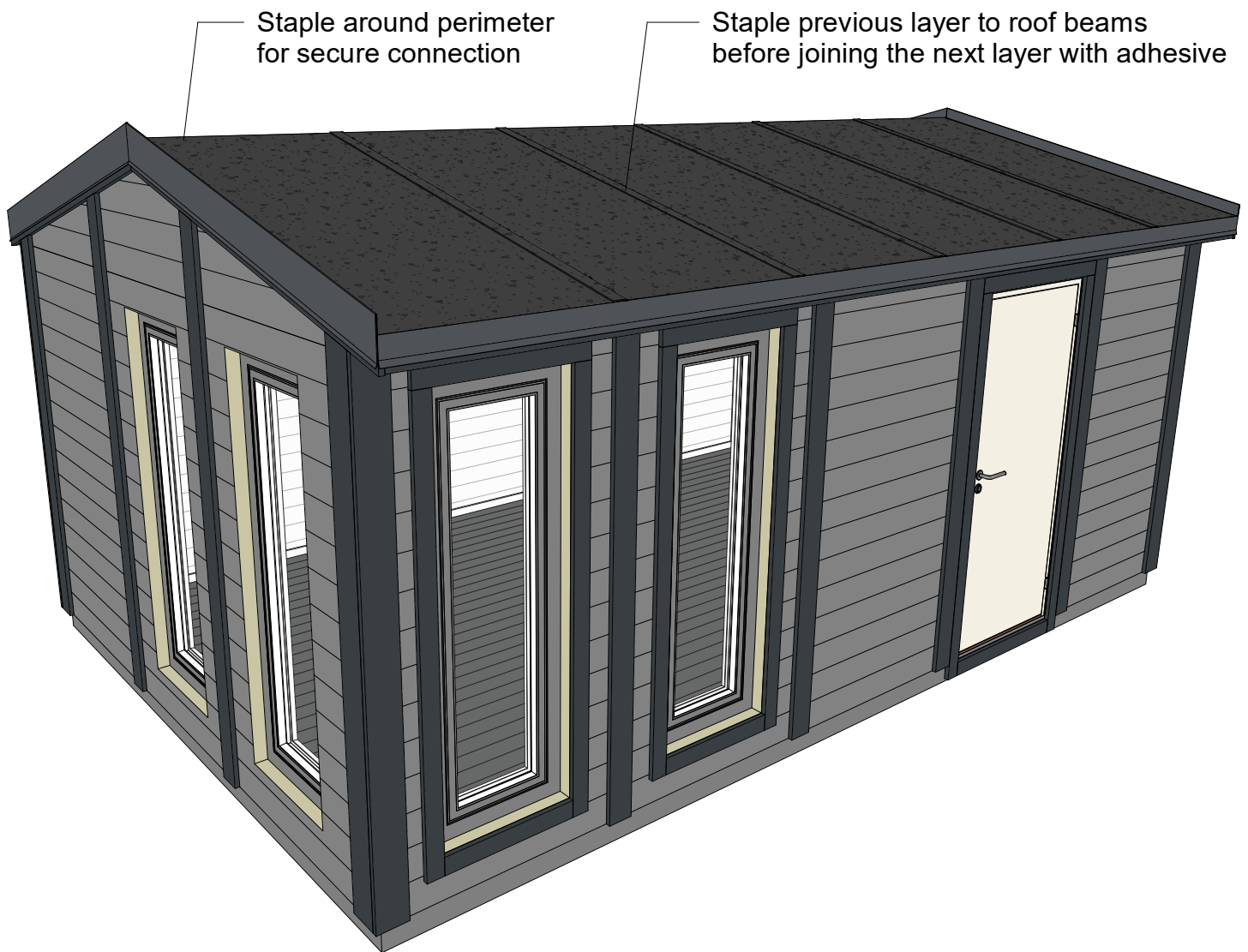
- RSCR - Self-drilling metal screws, 50 pcs.
- RSCR2 - 4,2x25mm screws, 100 pcs.



Materials

- RD - Roof metal detail, 4 pcs.
- RD2 - Windward edges, 4 pcs.





Materials

***Cut to length during montage**

- R2 - Bitumen roofing

